



Child and Parent Centres



Department of Education

BEYOND CO-LOCATION: GOVERNMENT AND COMMUNITY SECTOR ORGANISATIONS WORKING IN NEW WAYS TO IMPROVE OUTCOMES FOR DISADVANTAGED YOUNG CHILDREN

Garry Hewitt Executive Director, Office of Early Childhood
Development and Learning, WA Department of Education



everyone's family

Greg Ryan-Gadsden, General Manager, WA The Smith Family



© A.Sex 2013



Early Childhood Australia
A voice for young children

SEASONS OF CHANGE EARLY CHILDHOOD AUSTRALIA NATIONAL CONFERENCE 2014



Child and Parent Centres

Contents



Department of Education

- Why we are here
- The partners
- Need for Change
- Child & Parent Centres
- Extended Service Hubs
- Common themes
- Lessons learned
- The Future



everyone's family



© A.Sex 2013



Early Childhood Australia
A voice for young children

SEASONS OF CHANGE EARLY CHILDHOOD AUSTRALIA NATIONAL CONFERENCE 2014



Child and Parent Centres



Department of Education

Why we are here?

- To share :
 - experiences of working together (Gov't & NGO)
 - lessons learned
 - 2 case examples
 - ideas for applying our learning



everyone's family



© A.Sax 2012



Department of Education

The Partners



everyone's family

Department of Education

- Western Australia's largest employer with approximately 37 000 staff in nearly 900 worksites across the State
- Approximately one third of the Government workforce
- Annual operating budget is over \$5 billion

The Smith Family

- Australia's largest independent children's education charity
- Supports young people in need, through education
- 112,000 chn & families supported, including 34,000+ children on scholarship
- Programs from early years to tertiary for parents and carers
- Strength as a facilitating partner, broker
- Innovation
- Advocacy for those in need



© A.Sex 2013



Early Childhood Australia
A voice for young children

SEASONS OF CHANGE EARLY CHILDHOOD AUSTRALIA NATIONAL CONFERENCE 2014

What do NGOs bring to the partnership?

- Strong and trusted relationship with community
- Experience and skills in community development, facilitation, coordination, brokering and delivery of services
- Holistic perspective
- Strong existing network with local community services
- Strong links to business, philanthropy and volunteers



© A.Sax 2013

Need for change

- Lack of effectiveness and efficiency (families & system)
- AEDI and NAPLAN results
- Learning and developmental issues detected too late
- Lack of integrated planning and strategy (whole community)
- Community assets not leveraged
- Vulnerable families have difficulty engaging with services
- Families can feel stressed, disempowered and disengaged
- Expectations of schools



© A.Sax 2013



Child and Parent Centres

- 16 Child and Parent Centres on public school sites in vulnerable communities. 0-8yo (focus on 0-4)
- \$48.7 million provided by State Government to establish and operate Centres
- Locate services in local primary school for easy access
- Integrated services and programs
- Use and build upon existing service networks
- Genuine engagement of families





everyone's family

child and Parent centre Host School Sites in WA

South Hedland

- South Hedland PS

Geraldton

- Rengway PS

Metro

- Brookman PS
- Callista PS
- Challis Early Childhood Education Centre
- Dudley Park PS
- East Maddington PS
- East Walldid PS
- Gosnells PS
- Nearabup PS
- Roseworth PS
- Warriapendi PS
- Westminster Junior PS

Bunbury

- Carey Park PS

Collie

- Wilson Park PS

Albany

- Mt Lockyer PS



© A.Sex 2013



Early Childhood Australia
A voice for young children.

SEASONS OF CHANGE EARLY CHILDHOOD AUSTRALIA NATIONAL CONFERENCE 2014





Who runs the 16 Child and Parent Centres?

10 NGOs

Anglicare WA	Ngala
Centrecare Inc	Parkerville
Geraldton Regional Community Education Centre	The Smith Family
Investing in Our Youth	YMCA of Perth
MercyCare	Wanslea Family Services





Why locate Centres in schools?

- There is a public school in every community
- Schools are natural places for families to access support
- Facilities largely unused outside of school hours
- Parents have good will towards their local school





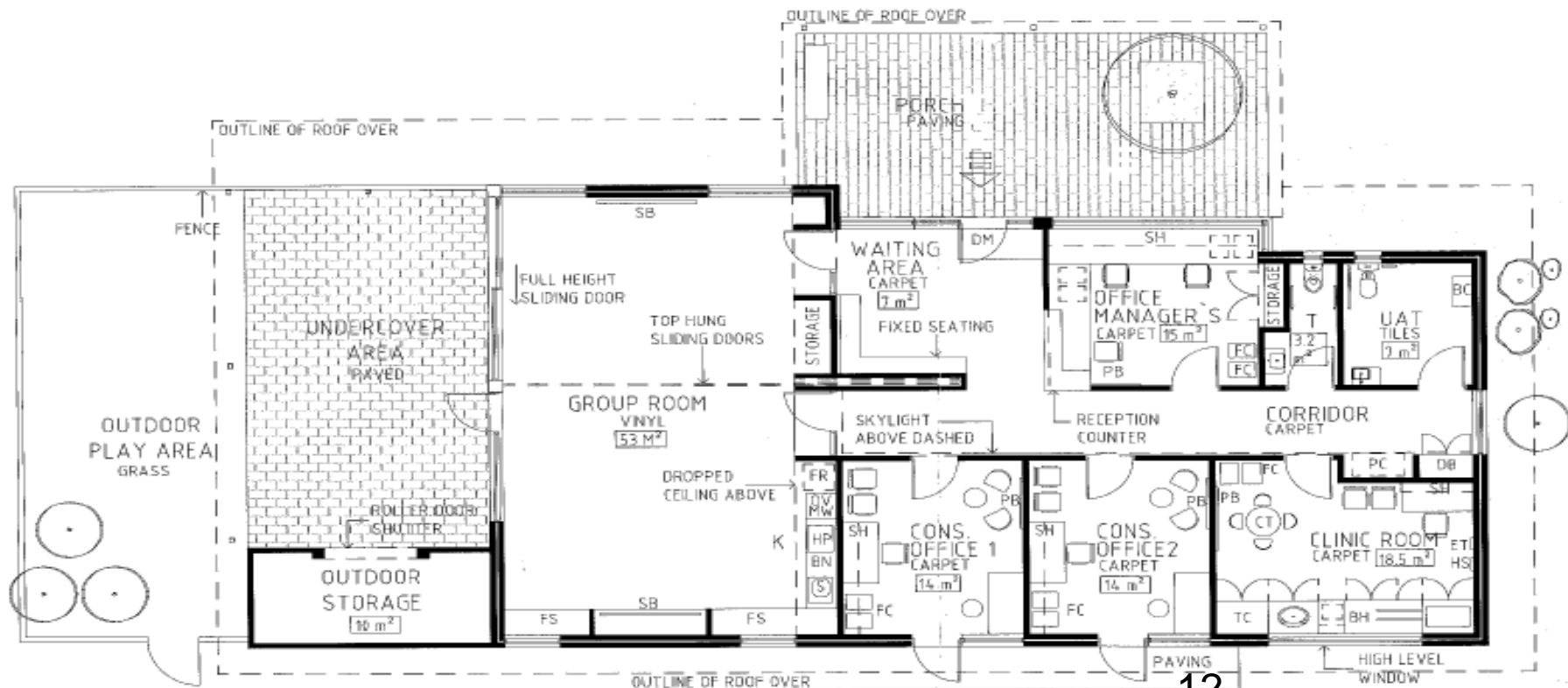
What do the Centres provide?

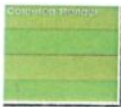
- Early learning programs with parental involvement (playgroups)
- Parenting information and support programs
- Student assessment referrals
- Mental health support and psychological counselling
- Antenatal education, nutritional and breastfeeding advice
- Allied health services
- Services and programs determined by the community





Floor-plan Roseworth CPC





Southern Elevation
Cable Street Frontage



Northern Elevation
Main Entrance Frontage



CHILD & PARENTS CENTRE WILSON PARK PS
WILSON PARK PRIMARY SCHOOL COLLIE
1344 SK300 FEBRUARY 2014

DESIGNED BY
MCG ARCHITECTS PTY LTD
1344 SK300 FEBRUARY 2014



m c g a r c h i t e c t s p t y l t d





What is an Extended School Hub?

- Working together
- Doing things differently
- Coordinating services
- Local decision-making
- Pooling resources



everyone's family





Department of Education

Extended Services School Hub

Consultation

Planning

Implementation



everyone's family

© A.Sex 2013



Department of Education



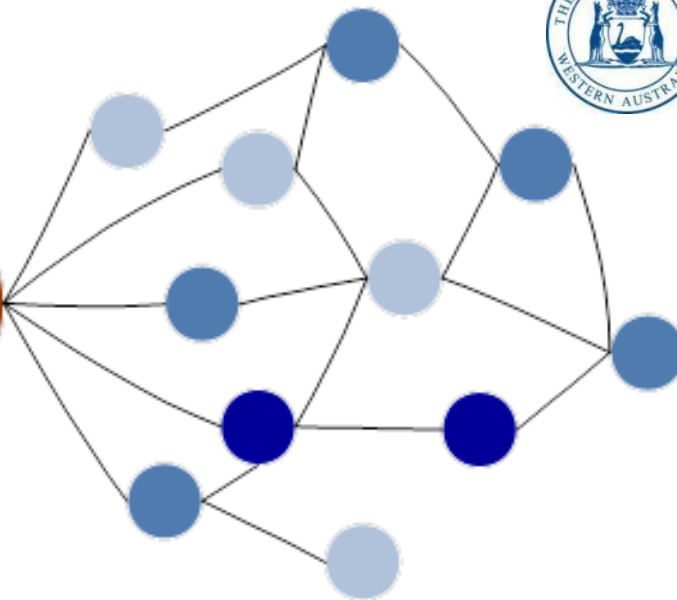
The School
Community

The School



The Smith
Family

The Lead Agency



Community Partners
(Including agencies, business and others)



everyone's family



© A.Sex 2013



Early Childhood Australia
A voice for young children.

SEASONS OF CHANGE EARLY CHILDHOOD AUSTRALIA NATIONAL CONFERENCE 2014

Common Themes



Department of Education

- Lead agency, Leadership and Governance
- Teamwork and networking
- Consultation and integrated planning
- Audit of services, leveraging community assets
- Strong service mix based on identified community needs
- Data collection and evaluation



everyone's family



© A.Sex 2013



Lessons Learned

- Tender procurement (consultation, better communication of information, define parameters)
- Consistent change management implementation model (Kotter/Capioppe)
- Consistency of messaging
- Data to inform practice at local and strategic levels
- Representative working groups to develop/review operating frameworks
- Governance framework across all levels
- Collaboration in design & implementation



everyone's family





Department of Education

The Future

- Demonstration to Government, corporates and NGOs of effectiveness of working in partnership
- Development of a framework and toolkit
- The development of integrated service delivery



everyone's family



© A.Sex 2013



Early Childhood Australia
A voice for young children

SEASONS OF CHANGE EARLY CHILDHOOD AUSTRALIA NATIONAL CONFERENCE 2014